



Printed in U.S.A. by The New York World's Fair, Inc. 1963

LABOR LEADERS HAIL WORKERS FOR GREAT PROGRESS ON FAIR

Four labor leaders provided statements for the Labor Day issue of FAIR NEWS as salutes to the small army of workers building the Fair in Flushing Meadow Park:

Peter J. Brennan, president, Building & Construction Trades Council:

We are proud of the fact that the Building and Construction Industry and its various unions presented a no-strike pledge to Mr. Moses and the Fair as far back as the spring of 1961. We are still prouder that the pledge has been honored and we assure the Fair that it will continue to be honored through the life of the Fair.

Our men are dedicated to this job in the knowledge that the Fair will do much to sustain a lasting peace throughout the world by providing steel and concrete proof of the accomplishments of all nations.

Peter W. Eller, chairman, Building and Construction Industry Advisory Committee:

As mediator and, in some cases, arbitrator in differences that have arisen and may arise during the Fair and its construction years, I have seen the no-strike pledge work successfully. It is reassuring to know that we have well-oiled machinery to handle any possible dispute, so nothing can hamper the building of this great international exposition. In passing, I would like to commend the fine cooperation afforded by Peter J. Brennan, president, and Thomas Tobin, secretary of the Building and Construction Trades Council, in achieving the great results already evident. It represents a fine example of the Fair's theme, Peace Through Understanding.

Raymond R. Corbett, president, N. Y. State AFL-CIO:

As head of the State AFL-CIO, I find it gratifying to note the great employment opportunities provided by the Fair and its supplementary activities, such as the arterial complex. Labor owes a great debt to the Fair and its officials for enabling us to find more jobs for our men. The debt, no doubt, has been and will be paid off in dedication, skill and plain, old fashioned sweat.

Harry Van Arsdale, Jr., president, N.Y.C. Central Labor Council AFL-CIO:

The N.Y.C. Central Labor Council AFL-CIO has watched the Fair grow from nothingness to its present state of near-completion with justifiable pride. It is our men, pledged to refrain from strikes, who have put this great exposition on the road to completion for April 22, 1964 and we feel it is a reflection of our respect and admiration for the great builder of our time, Robert Moses.

© 1963 New York World's Fair 1964-1965 Corporation

APRIL 22 OPENING ASSURED BY MEN WHO BUILD THE FAIR

Construction Pace Reaches Peak as Fair Salutes Labor Day 1963

The rapid pace of construction at Flushing Meadow Park, where more than ninety pavilions are under way and many others set for completion in the fall, places the Fair right on schedule for its April 22 opening.

President Robert Moses and other Fair officials joined exhibitors in hailing reports of construction progress as "testimony to labor's significant contribution and a tribute to the skill and dedication of the men whose work at the site is largely responsible for the fact that the Fair's gates will open on time."

Electricians, carpenters, operating engineers, pile drivers, plumbers, steam-fitters, heating and ventilating experts, cement workers and many other specialists—a small army of them—are all part of the team now working at full speed to shape steel and concrete into a wonderland for seventy million people.

Over 12,936,660 man-hours of work have been completed since the start of construction—representing a payroll exceeding \$65 million. There were 9,332 workers employed on the Fair complex in July alone as the increasingly fast pace of exhibitor construction became readily visible throughout the square-mile site.

To Members of The Building Trade Unions of New York City

We are happy to dedicate this issue of Fair News to you and trust you will share it with your family. When the Fair opens on April 22, 1964, you can take pride in the accomplishment of labor in completing this major project of world-wide significance on time.

ROBERT MOSES
President
New York World's Fair

165 WORKING DAYS TO OPENING DAY



Lunch hour interlude at future Terrace Club, on top of the Port Authority Helicopter Tower at the World's Fair. Harmonica Rascals at work.



President John F. Kennedy at site of Federal Exhibit with George Fiche whose bulldozer moved first earth during December ground-breaking ceremonies.



Working with scaffolding for Turner Construction at General Motors Exhibit is Joe Hansome.



Perry Whittaker, American Bridge, shows on model where last section of land mass is to be anchored to the Unisphere®. Washington, D. C. is marked by flag as section is hoisted into place.

FAIR EXHIBITORS PRESENT

American Machine and Foundry (Monorail)—substructure work completed for AMF Monorail.

Amphitheatre—renovation of the Amphitheatre is scheduled for completion in December.

The Arena—foundation work started.

Austria—structure being prefabricated in Austria.

Bell System—structural steel building frame completed, working on roof, enclosing structure.

Better Living—foundation completed, steel work started.

Boy Scouts—land cleared, foundations to start next month.

Brass Rail—twenty-two foundations completed.

Century Grill—structural steel erected.

Republic of China—foundations completed enclosing building.

Christian Science—exhibit building and adjoining reading room building are erected with the sides enclosed.

Coca-Cola—Steel for the pavilion's 120-foot Tower of Music has been installed. Building enclosed.

Continental Circus—installing underground utilities.

Continental Insurance—All excavation and pile driving have been completed.

Dancing Waters—structure being prefabricated for shipment to Fair.

Denmark—Construction started on laminated wood structure.

du Pont—Structural steel erected, enclosing building.

Dynamic Maturity—foundations and structural steel have been completed.

Eastern Airlines—work to start September 1st.

Eastman Kodak—work is 80% complete.

Electric Power & Light—the last piece of steel was put in place on August 15, right on schedule.

Equitable Life Assurance Society—as of August 9, all foundation work was completed. Erecting side walls.

Federal Pavilion—foundation completed, structural steel frame topped off August 22nd.

First National City Bank—the employee's service branch, located on Meridian Road, will open on September 16th. William R. Cogan and Robert F. Burns will be the officers in charge. The branch will serve Fair and exhibitor employees. Structural steel erected for exhibit building.

Florida—All of the piling has been driven, the concrete footing and foundations are being poured and steel construction has been started.

Ford—structural steel completed, working on exterior and interior finish.

Formica—structure almost enclosed, working on interior and pool area.

Gas, Inc.—structural steel complete, working on interior, exterior work and roof.

General Cigar—foundation completed—structural steel placement completed.

General Electric—General Electric Progressland is estimated at 85% total completion.

General Motors—structural steel work completed. Started painting exterior and working on interior finish.

Billy Graham—during the week of August 12, all underground mechanical work—including plumbing, electrical and fire line installations—was completed.

Greyhound at the World's Fair—building will be completely weathered in by September 1.

Guinea—working on foundations.

Hall of Education—foundation completed, structural steel work started.

Hall of Science—driving piles.

Hawaii—substructure work is proceeding.

Hall of Free Enterprise—structural steel and roofing completed.

Port of New York Authority Helicopter—structural steel completed, exterior finish nearing completion, working on interior. Scheduled to open October 15.

Hong Kong—structure 80% closed in. Exterior finish almost completed, interior finish being worked on.

House of Good Taste—the three-home exhibit is scheduled for completion by mid-December.

India—pile driving completed. Structural steel work to start September 15.

Indonesia—piling completed, foundation completed—structural steel work started.

International Business Machines—the steel skeleton of the 90-foot ovoid theater has been completed and the Gunite shell is 90% finished.

International Plaza—building one: structural framing, roofing and concrete was completed. Buildings two, three and four: foundations are complete and structural steel erection has started.

Ireland—foundation work for the stone and stucco-faced building complete; structural steel set to begin next month.

Japan—foundations almost completed, structural steel placement to start soon.

Johnson's Wax—topping-out ceremonies planned for early September. The steel skeleton of the pavilion's huge disk-shaped

DIARY OF PROGRESS

theater is now complete.

Jordan—excavation started, working on foundations.

Liebmann Breweries—Rheingold's "Little Old New York" will be ready by the first of the year.

Federation of Malaya—foundations completed, pre-fab structure in transit.

Maryland—pile driving completed, working on foundations. Structural steel work to start September 6.

Masonic Brotherhood Foundation—pile driving completed, work to start shortly on rest of foundation work.

Mexico—pile driving completed, working on foundation. Structural steel placement started August 18.

Missouri—structural steel complete and work on the roof decking and floor slab is about to begin.

Mormons—the pre-cast concrete walls of the Pavilion of The Church of Jesus Christ of Latter Day Saints began rising August 26, after being trucked from Salt Lake City.

National Cash Register—foundations completed, working on utilities. Structural steel being placed.

New England States—foundation work started.

New Jersey—foundation completed, and all 21 concrete pedestals completed.

New York City—scale model of Greater New York near completion and rink for Dick Button's Ice-Travaganza under construction. Renovating interior of building.

New York State—foundations completed. Working on exterior wall of theater, on tower concrete, and assembling steel compression ring on ground.

Pakistan—structure enclosed, except for roof. Placing structural steel.

Parker Pen—piles complete—working on foundations.

The Pavilion—pile driving completed.

Pavilion of American Interiors—the steel framework is completed and the three circular linked structures are clearly visible.

Pepsi-Cola—piles completed and working on foundation. Structural steel work to start October 15.

Philippines—working on foundation.

Protestant Center—foundation completed, structural steel placement started August 20.

Radio Corporation of America—building is well ahead of schedule. All the steel is in place and the concrete floors, ramps and galleries have been placed.

Ricksha Inn—steel construction in progress.

Santa Maria—replica of Columbus'

flagship well ahead of construction in Spain.

Schaefer Brewing Company, F. & M.—approximately 15% completed at the present time. Steelwork 90% completed.

Scott Paper Company—foundations have been completed and building of the pre-fab structures was begun August 12.

Sermons From Science—construction started August 15.

Seven-Up—work to start on foundation August 28th.

Simmons—building complete and enclosed, working on finishing touches for exterior and interior work.

Sinclair Refining Company—the Dinoland Pavilion is about 30% complete and expected to be finished by October. The Sinclair Service Station in the Flushing Meadow Parking Field is approximately 25% complete. The other station in the Flushing Airport Parking Field will be started within the next two weeks.

SKF Industries—completed foundations for its 5000-square foot pavilion. Schedule calls for completion of the building before the end of the year.

Socony—structural steel work to start about September 1.

Spain—working on foundations in one section of lot. Placing structural steel in other section and enclosing building.

Sudan—foundations completed, structural steel work started August 23.

Sweden—structural work started in mid-August.

Swiss Sky Ride—foundations completed. Superstructure will start on October 27.

Switzerland—completed excavation, working on foundations.

Texas—the pavilions and the Music Hall placing prefabricated walls and steel.

Transportation and Travel Pavilion—work has begun on footings and foundation walls. Steel due next month.

Travelers Insurance Companies—the "umbrella" building is well ahead of its construction schedule with all structural steel and concrete work completed.

Underground World Home—foundations started.

United States Rubber—piles completed, working on foundations. Structural steel work started.

United States Steel—the Unisphere®, symbol of the Fair, presented by United States Steel, has all the continents and orbital rings in place. Work to be completed in September.

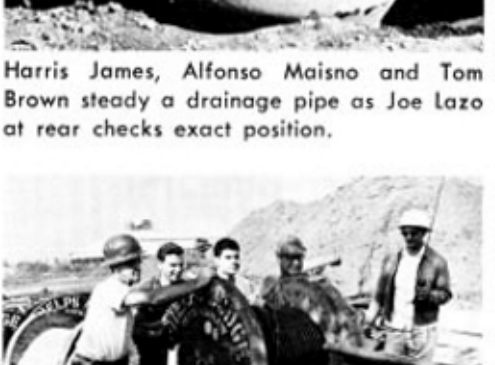
Vatican Pavilion—the basement concrete work and the main floor concrete slab was completed on August 14. Place-



Frank Campanello digs foundations for flagpoles at the Court of States.



Harris James, Alfonso Maisno and Tom Brown steady a drainage pipe as Joe Lazo at rear checks exact position.



Clayton Douglas, Jerry Hyman, Dave Mercer, H. N. De Clerck and Pete Santo roll electrical cable for the New York State Exhibit.

ment of the steel frame will begin on August 26.

Walter's International Wax Museum—work will start August 22nd.

Westinghouse—construction of the three 100-foot towers will proceed next month, and the entire pavilion is scheduled for completion by November 1.

West Virginia—working on foundations.

World of Food—piles completed, working on foundations, structural steel work to start September 2.

SINEWS, GREEN THUMBS AND IMAGINATION TYPIFY WORKERS

Surrounded by buildings which are a testimony to the power of machinery, the work of landscape gardeners is done in the same manner in which it has been done for centuries.

Augie Rosaspina, member of Local 751 of the Excavators Union, is foreman of one such crew. His men are both young and middle-aged.

"It's hard work bending all day in the hot sun. You have to have a love for green things. But most of all you have to have vision to take a bare plot and see in your mind how beautiful it will look because of the work you have done."

The first construction worker hired for the 1939-1940 New York World's Fair—with an inscribed medal to back his claim—is back on the job again.

Chris Kearney who literally helped to transform Flushing Meadow "from dump to glory" was hired in 1936 to maintain a power shovel preparing the ground for construction. Junk from the city dump filled in the swamps.

How does construction compare in the span of 25 years bridging both Fairs?

"Everything gets done much quicker now—steel is lighter, stronger, beams are smaller and the modern construction equipment sure makes a difference—it's all automatic now."

Young Warren Weltsch is general field superintendent for the firm of plumbing contractors working on the RCA Pavilion, Chrysler exhibit, several of the large fountains, the Pavilion of Florida and public drinking fountains and comfort stations.

"There have been a lot of headaches here, not the least of which was coping with existing utility pipes used in the last Fair, 'joining them because I couldn't bear them.' But when I visualize the Fair with its millions of people using the utilities I am responsible for, I know everything will have been installed straight and symmetrically, the fountains will work and even the porpoises will be playing around in the environment they need to maintain their health because I am a good plumber."

"I've been a sheet metal worker for 25 years—foreman of 22 of them," says Joe Castelluccio, member of Local 20, Sheet Metal Workers Association.

"How did I become a foreman? I just worked a little harder and took advantage of the classes the union ran."

"Take a job like this one," he points out, referring to the RCA building, "you have to know mechanics and duct design. It's a tough job with all its round structure, arches, different ceiling heights. You work with a fixed tangent trying to figure out how you're going to get all the ducts through. But it's got to get done. They

couldn't work here unless they had enough ventilation. Have you any idea how much heat builds up in a television studio?"

"I'll tell you though—new challenges are laid sauce on the macaroni you eat every day. The macaroni tastes the same, but it's when you change the sauce that you give it new flavor."

"Work in steel and see the world" is the credo of Gerald Durant, American Bridge Division (U.S. Steel Corporation) man on the Unisphere® job.

"I've been in every country in the world except Russia and Australia. I left steel construction work for a while when the government invited me to see the Okinawa invasion and then sent me to my most dangerous assignment—just outside Hollywood, where I spent every cent I'd saved up."

A member of Local 40 of the International Association of Bridge, Structural and Ornamental Iron Workers, Durant worked on the Port Authority Heliport for a while before starting on the Unisphere® in March.

"I've worked on some pretty interesting jobs in my life, but I never saw one like this."

Durant started in steel construction at 18, in northern New York near the border.

SERVICE BUILDINGS AND FACILITIES CONSTITUTE A CITY WITHIN A CITY

Most Structures Complete, Others Ahead of Schedule

The Fair Corporation's own construction program is progressing right on time. Eight of the Fair's ten administration buildings are already in use by the exposition's staff and consultants. Included are the Administration, Press, Security, Maintenance and Identity Buildings, two Maintenance annexes and the Southern Precinct Police Station. Two additional service structures, the Post Office and Entrance Building, are both approaching the operational stage.

Other completed items include basic roads and utility systems, major tree moving and planting, and filling, shaping and grading of parking fields and other areas. The utility system alone involved 14 miles of water mains, 130 miles of high voltage electrical cables, 22 miles of storm and sanitary piping, and 10 gas mains. Basic road construction in the main exhibit area has been finished and has passed the half-way mark in the Lake Amusement Area.

Construction is progressing at the rate of \$2.5 million per month and accelerating. Some \$23.7 million of the total \$48.5 million Fair Corporation program for construction and landscaping has been completed.

TRANSPORTATION FACILITIES

The one-quarter long pedestrian overpass between the Willets Point Subway Station and the Fairgrounds, over which 50% of the visitors will enter the Fair, is now completed. The new 6-track Long Island Rail Road station which connects to the pedestrian overpass is completed and in operation. The 11th Street bus terminal is finished and the Rodman Street terminal is complete except for final paving. Together they will accommodate 33 local buses at one time. The charter bus terminal at 11th Street, with all day parking for 170 long distance buses and 30-minute parking for 128 shorter haul buses, is now complete.

(Two of the Fair's four parking fields (Roosevelt Avenue and Lawrence Street)

are finished. Final paving and other minor work will complete the remaining fields by winter to provide parking space for more than 20,000 cars.

In addition, the first important step was made in the program of eliminating pollution from Flushing River and Bay, in order to provide clean surroundings for the new Marina. Also, the Corps of Engineers has three major dredges at work deepening the bay, and the breakwater is well advanced.

One of the critically important basic jobs on the Fair site is the completion of curbs and paving which requires exact schedules dovetailed with final phase electrical work and with exhibitors' construction. As of July 26th, 20.5% of the paving was in place.

A contract was awarded for 3,500 bench units to be placed in street malls and park areas throughout the Fairgrounds. Installation of the 350 poles from which flags of various nations, states and cities will be displayed was also started in July—more evidence of the Fair's quickening pace toward opening day ceremonies on April 22.